

# *Washington D.C. Scenes*

## GRAND SCALE CANVAS by BARBARA HAILS



The **U.S. CAPITOL** - at the eastern end of the National Mall, containing Chambers of the Senate and House of Representatives.

Over-sized Limited Edition Giclees on Canvas feature unique views of the Nation's Capital. Select from two Grand Scale sizes to fill larger wall spaces in home or office.

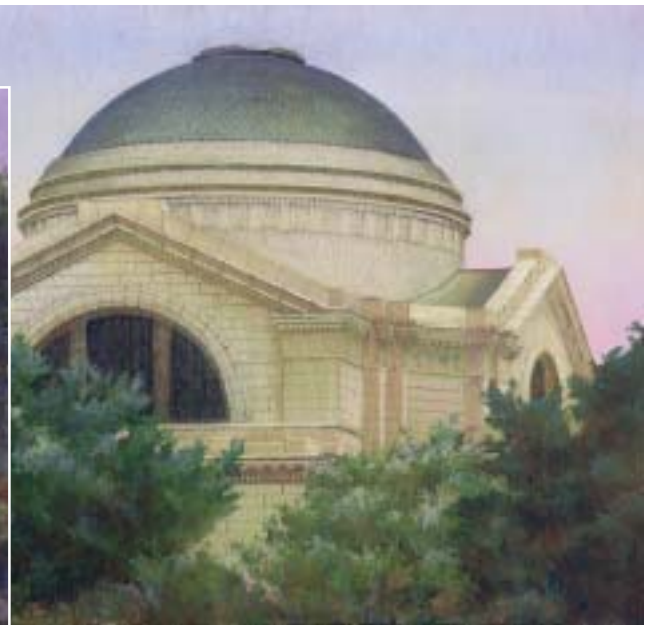
All are available for custom order in size 30" x 40" or 40" x 60", signed and numbered. Options include premium, heavy-duty stretchers, deep gallery wrap, and wiring. Allow four weeks.



**LOW BRIDGE** - C&O Canal Towpath at 30th Street in Georgetown



**ARTS and INDUSTRIES BUILDING**, Smithsonian Institution, on the Mall at Independence Avenue adjacent to the Castle Information Center.



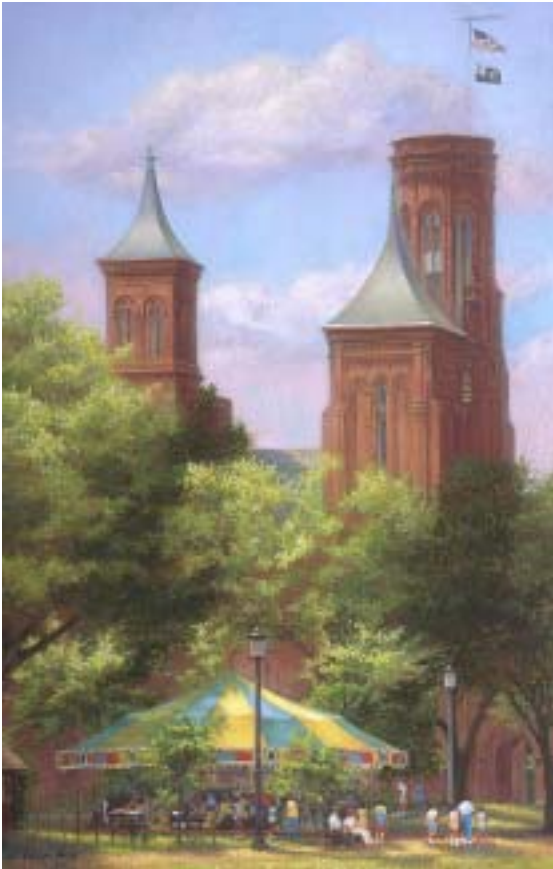
**NATURAL HISTORY MUSEUM**, Smithsonian Institution, on the Mall at 10th Street and Constitution Avenue.

# Washington D.C. Scenes

## GRAND SCALE CANVAS by BARBARA HAILS

Over-sized Limited Edition Giclees on Canvas feature unique views of the Nation's Capital. Select from two Grand Scale sizes to fill larger wall spaces in home or office.

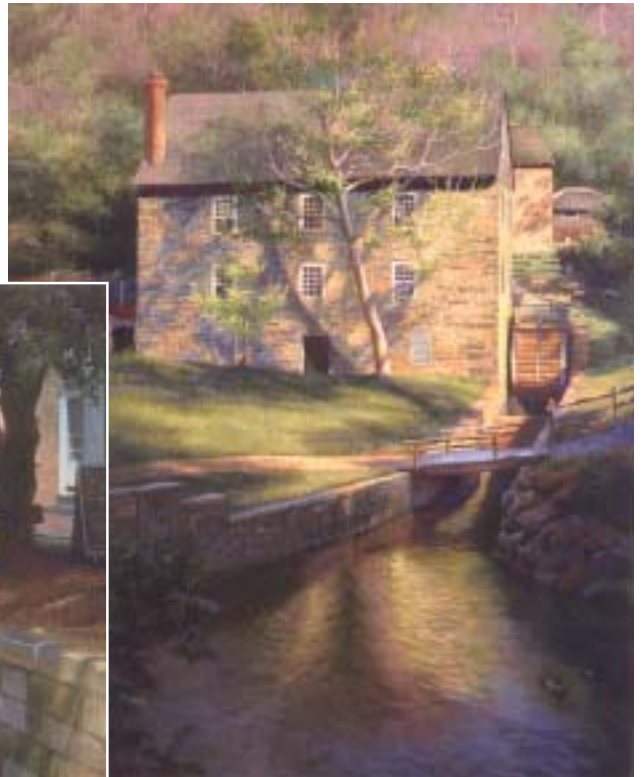
All are available for custom order in size 30" x 40" or 40" x 60", signed and numbered. Options include premium, heavy-duty stretchers, deep gallery wrap, and wiring. Allow four weeks.



**CASTLE & CAROUSEL** - the Smithsonian Institution Information Center on the Mall between Jefferson Drive and Independence Avenue.



**PARK BENCH IN SNOW** - Rock Creek Park in winter along Beach Drive



**PEIRCE MILL** on Tilden Street in Rock Creek Park (c.1820), a National Park Service museum.



**The CANAL** - C & O Canal Towpath and "Canal Clipper" at Jefferson Street in Georgetown

© Hails 2004